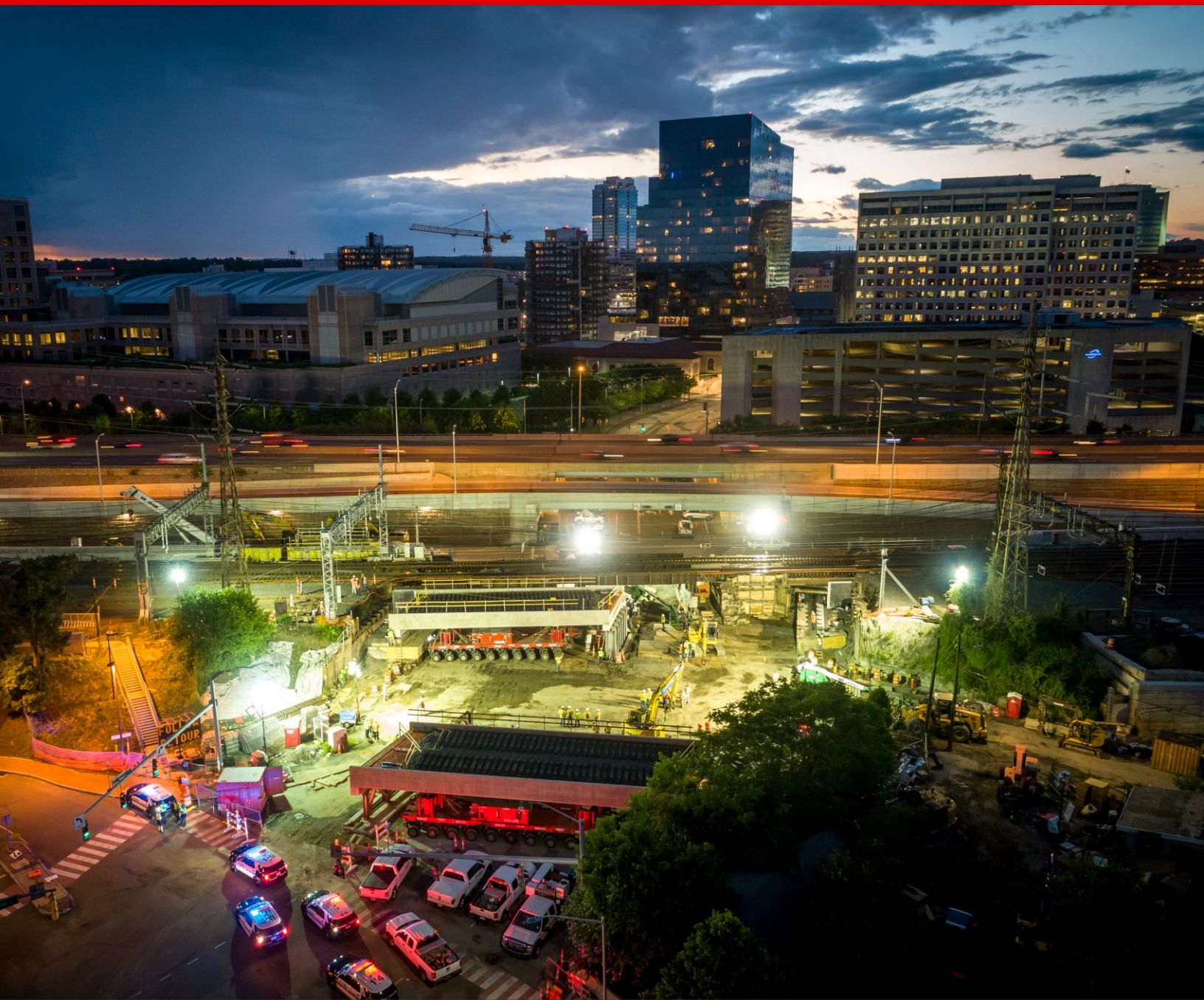


OnTheMove

The Monthly Newsletter from the Berard Team

August
2019



In This Issue:

BERARD
SINCE
1945

The Mega Transport Experts

- > Bridging The Gap | Stamford Rail Project
- > The Shipyard | Launching LCS 24
- > Spotlight On Safety | The Heat Is On!

Bridging The Gap Stamford Rail Project



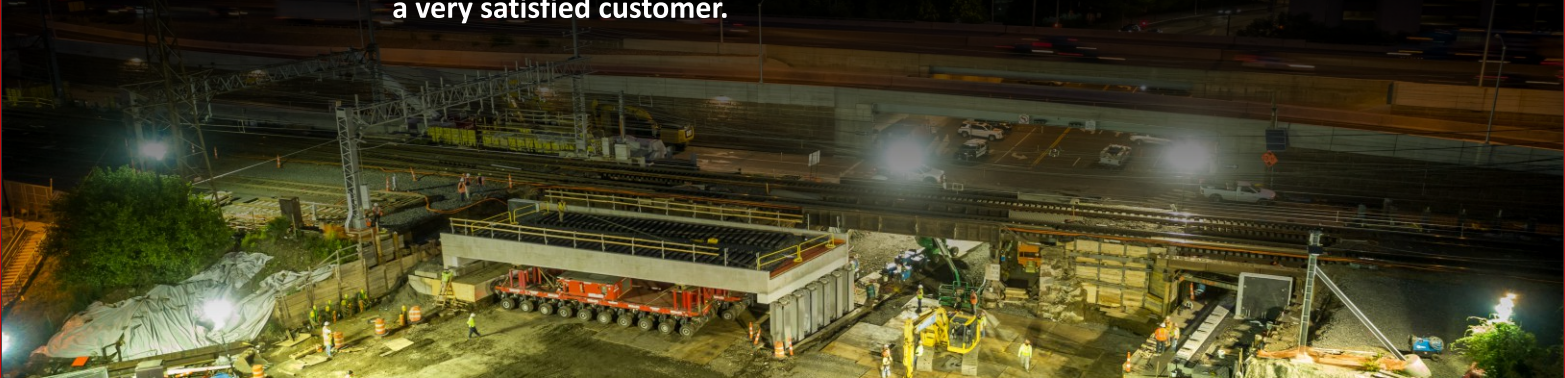
Job Specs

Weights:
(2) 663 Tons & (4) 709 Tons

Dimensions:
70'L x 25'W x 81'H

Equipment Used:
20 axle lines of SPMTs,
2 power packs,

Helping to build America's infrastructure is something we're proud to be a part of. The team traveled to Stamford, Connecticut to replace an existing 100+ year old steel girder rail bridge mainly used as a commuter rail line for patrons traveling into & out of NYC. The bridge wasn't built to meet the demands of 21st century traffic, thus the new bridge would be wider and taller, allowing for more vehicles to pass through at once as well as commercial trucks. The bridge was removed and replaced in (3) phases, first the south most section of the bridge was demoed and Berard brought in two pre-built spans that were adjacent to the existing bridge. Berard had to carefully place the bridge onto the bridge bearings for the piers/abutments and technical requirements per the DOT were that the bridge must be within $\frac{1}{4}$ ". The 2nd bridge assembly area was adjacent to busy I-95 while also maintaining one open lane for South State Street traffic to pass. On July 4th Berard was allowed to transport (2) bridge sections in convoy .75 miles from the assembly area to the bridge construction site. Berard placed the bridge sections nearby and awaited the order to drive the sections into place. On July 5th, Berard transported the final (2) bridge sections to an area near the bridge and awaited orders to install. The Berard team finished the project on time, within budget, with no accidents or incidents and a very satisfied customer.





The Shipyard Launching LCS 24 USS Oakland



Job Specs

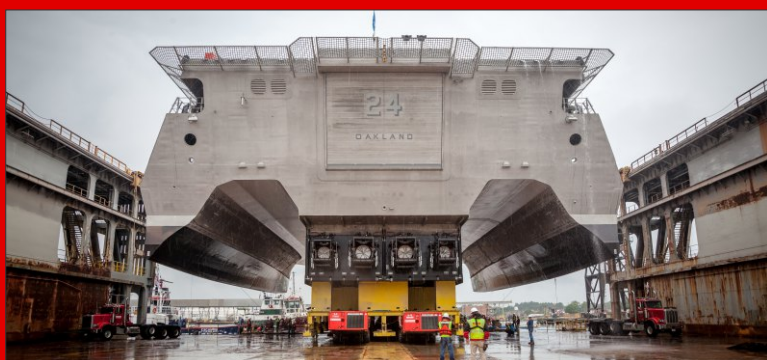
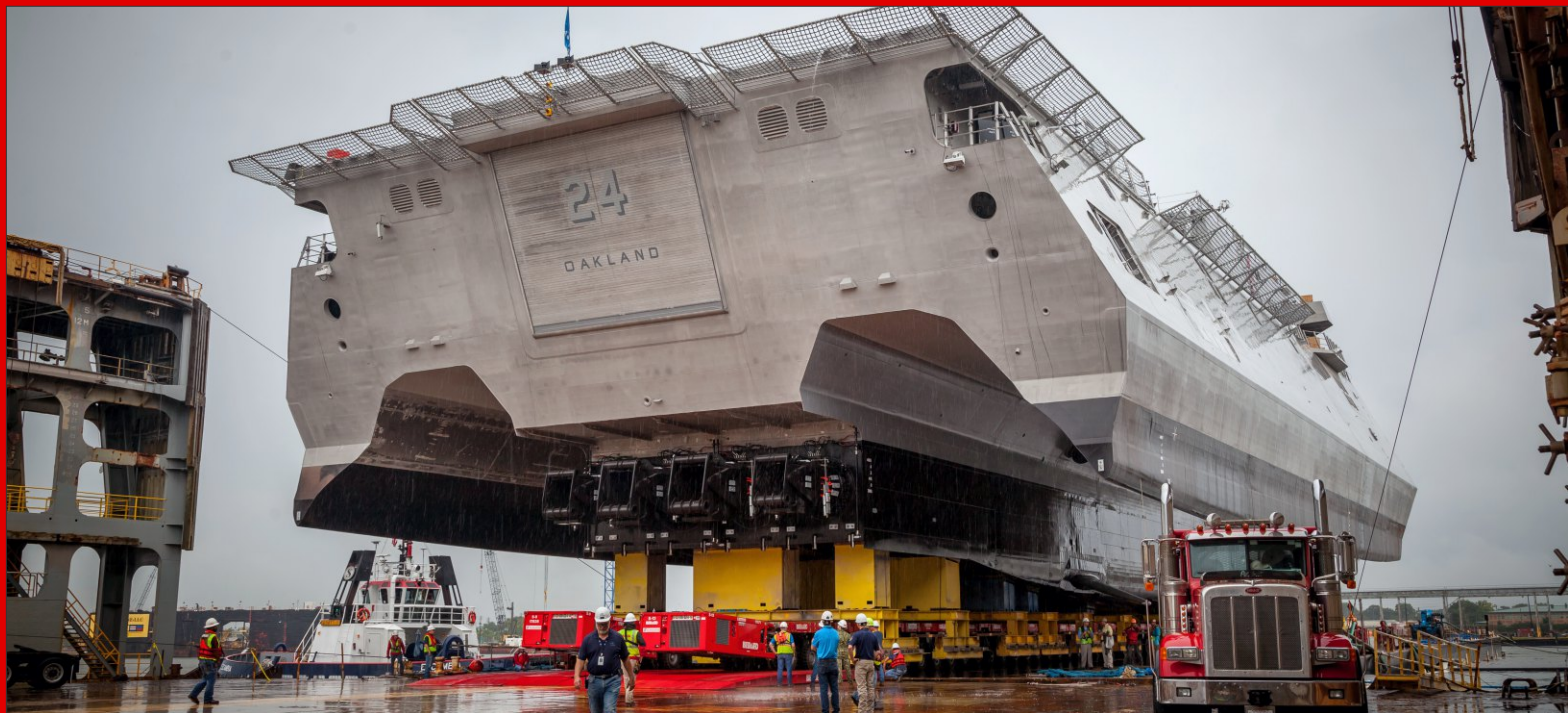
Weight: 2,800 Tons

Dimensions: 418'W x 107'L

Equipment Used: 112 axle lines of SPMTs, 2 deck spacers loading ramps, 18 high volume water pumps, 425' x 126' x 25' deck barge, 65 ton winches and tugs

The Berard Team was proud to take a pinnacle role in transporting the Navy's newest addition to its fleet, USS Oakland—a 418'L x 107'W Littoral Combat Ship (LCS)—built with pride by Austal in Mobile, Alabama. Berard accomplished the task using 112 axle lines of self-propelled modular transporters. The team rolled the 2,800 ton LCS from the final assembly bay to a waiting deck barge all in record time and keeping the project ahead of schedule. The LCS was then barged down river for trans-loading from deck barge to dry dock. The entire process was accomplished safely and in only one day, even when faced with adverse weather conditions. Congrats to our team members and everyone involved for another safely completed project!





The Heat Is On!



We all know by now that summer is here and the hotter temperatures that come along with it have been increasing over the last few weeks. One of the biggest factors in preventing heat-related illnesses is awareness. Knowing what symptoms to look for and how to treat effectively are key to surviving yet another long summer!

When the mercury rises, remember

H.E.A.T

Hydrate: drink plenty of water

Educate: yourself

Act: quickly if you or someone else shows signs of heat-related illness.

Thirst: is a poor indicator of your body's need for fluid.



Happy Birthday!

Happy Birthday to These Dedicated Team Members!

Camryn Angelle
Clay Bonnet
George Doucet
Jody Hataway
Shamery Mortensen

Anthony Roth
Tim Willson
Cheryll Berard
Andrew Berard
Ayden Berard